

MEGATEK

Wireless Speaker

Always there to support you

Get support at:

www.megatekelec.com

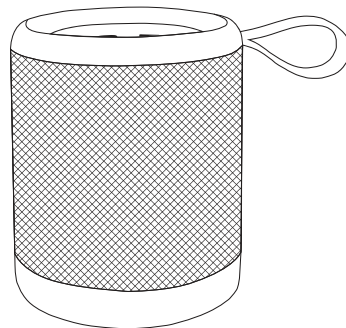
Question?

Contact Megatek:

service@megatekelec.com

USER'S MANUAL

T7



Before using your new product, please read these instructions to prevent any damage.

Safety Instructions

- Avoid dropping.
- Do not disassemble, repair, or modify the speaker.
- Do not use the speaker under the water.
- Use the speaker in normal temperatures.
- Use DC 5V charger only.
- Use original or certified cables.
- High volumes may damage your hearing. Use the speaker at a lower volume.

Specifications

- Bluetooth version: 4.2
- Bluetooth pairing ID: Megatek T7
- Transducer: 1 x 52mm
- Output power: 1 x 6W
- Frequency response: 70Hz – 20KHz
- Signal-to-noise ratio: 80dB
- Battery type: Lithium-ion polymer (3.7V 1000mAh)
- Battery charge power: DC 5V / 1A
- Battery charge time: 3.5 hours @ 5V / 1A
- Music playing time: up to 10 hours
(varies by volume level and audio content)
- Dimensions (H x W x D): 96 x 76 x 76 (mm)
- Weight: 219g

Package Contents



1 x Speaker



1 x User's Manual



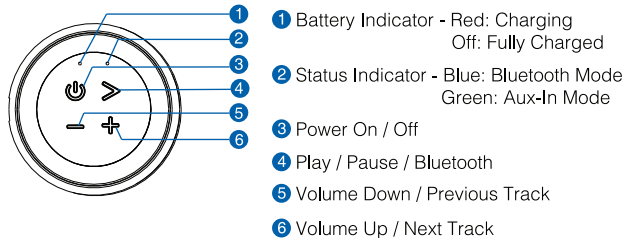
1 x 3.5mm
Audio Cable



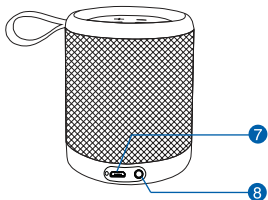
1 x Micro-USB
Charging Cable

Product Overview

Top View

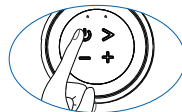


Back View

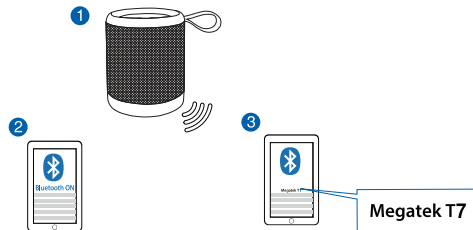


Using Your Wireless Speaker T7

1. Turn on / off



2. Bluetooth mode



Flashing blue

Bluetooth pairing mode

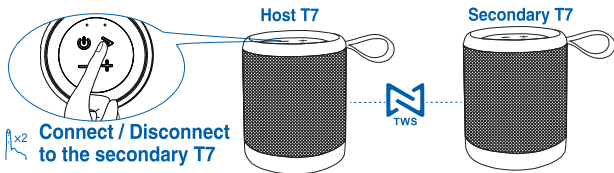


Solid blue


Paired to a Bluetooth device


True Wireless Stereo Pairing Mode

With the built-in True Wireless Stereo (TWS) technology, you can connect your T7 to another T7 and explore the best sound effects with left sound channel (the host T7) and right sound channel (the secondary T7) separated.



- Status indicator when True Wireless Stereo connected

Host T7:  Flashing blue

Secondary T7:  Steady blue

- Before connecting, make sure the secondary T7 is turned on and not connected to any other device.



- In True Wireless Stereo mode, the connected two speakers will work as one speaker system with only the Bluetooth pairing ID of the host speaker searchable.

- Once connected, the two speakers will connect to each other automatically when both turned on next time. You can disconnect them anytime by double pressing the > button.

- With True Wireless Stereo connected, operating either of the two speakers will operate the other the same.

Controlling Playback

Play / Pause / Answer / End call



Disconnect Bluetooth Pairing / Reject call



Volume down



Skip to previous track




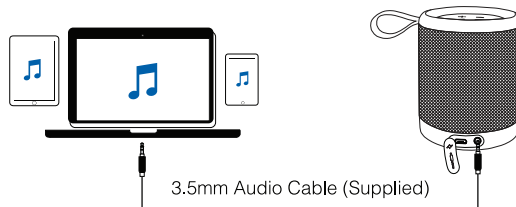
Volume up



Skip to next track



- When turned on, Wireless Speaker T7 will automatically connect to the last connected Bluetooth device if available. If not, press  button and hold it for 2 seconds to activate Bluetooth pairing mode.
- Having connection problem? Remove Megatek T7 from you device's Bluetooth history, and try pairing again.

3. AUX-In mode

Solid green

AUX IN mode



Disable / Enable the audio output.



- Plugging in an audio cable will automatically switch the speaker to Aux-in mode. When using in Aux mode, control playback via the connected device.

Charge your T7



● Solid red	Charging
○ Off	Fully charged



- Use the supplied USB cable to charge your Megatek T7 and make sure it is fully charged before first use, or when its battery is low.
- Disconnect your speaker from charger when fully charged. Do not charge your speaker for extended periods.

Troubleshooting

Unable to pair with a Bluetooth device

- Check that you are in Bluetooth mode.
- Ensure that you are within range of the Bluetooth speaker for Bluetooth functionality, 10 meters or less (33 feet or less).
- Move the Bluetooth speaker and Bluetooth device away from other Bluetooth devices/electrical equipment.
- If possible, turn off other nearby Bluetooth devices or disable their Bluetooth functionality.

No sound / Sound distortion

- Adjust the volume.
- If you are using a Bluetooth connected device, check the volume on the secondary device and on your Bluetooth speaker.
- Your Bluetooth speaker may need to be recharged.

FCC Statement

This equipment has been tested and found to comply with the limits for a Class B digital device, pursuant to part 15 of the FCC Rules. These limits are designed to provide reasonable protection against harmful interference in a residential installation. This equipment generates, uses and can radiate radio frequency energy and,

if not installed and used in accordance with the instructions, may cause harmful interference to radio communications. However, there is no guarantee that interference will not occur in a particular installation. If this equipment does cause harmful interference to radio or television reception, which can be determined by turning the equipment off and on, the user is encouraged to try to correct the interference by one or more of the following measures:

- 1) Reorient or relocate the receiving antenna.
- 2) Increase the separation between the equipment and receiver.
- 3) Connect the equipment into an outlet on a circuit different from that to which the receiver is connected.
- 4) Consult the dealer or an experienced radio/TV technician for help.

Caution: Any changes or modifications to this device not explicitly approved by manufacturer could void your authority to operate this equipment.

This device complies with part 15 of the FCC Rules. Operation is subject to the following two conditions:

- (1) This device may not cause harmful interference, and
- (2) this device must accept any interference received, including interference that may cause undesired operation.

The device has been evaluated to meet general RF exposure requirement. The device can be used in portable exposure condition without restriction.

12 Months Warranty

Thank you for choosing Megatek.

Megatek Electronics warrants your new product to be free from defects in materials and workmanship for a period of twelve (12) months, from the date of receiving. This warranty is in addition to your rights under Amazon's return and refund policies which apply to your purchase.

Megatek will provide you with a brand-new replacement (where possible) for this product if it becomes defective within the warranty period. Megatek will bear the reasonable expense of claiming the warranty. This warranty will no longer apply where the defect is a result of alteration, accident, misuse, abuse, or neglect.

Please contact our Customer Service with your order ID and description of the problem, for warranty claim or any difficulties with your product:

Email: service@megatekelec.com

Amazon Buyer-Seller Messages: Go to Your Orders then find your order in the list, click **Megatek Electronics** link below the product title, click the **Ask a Question** button.