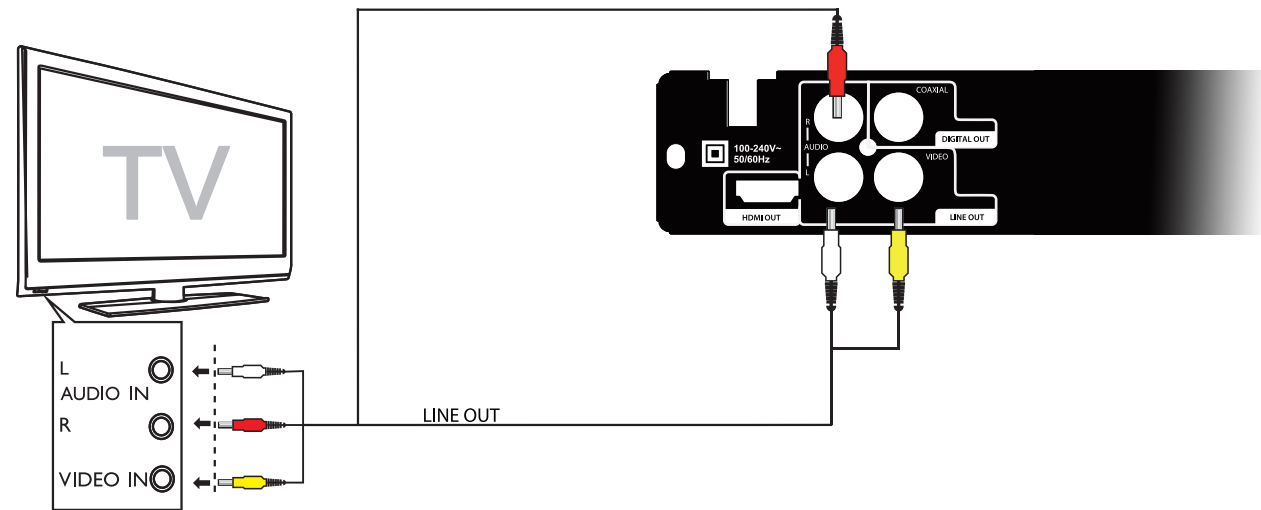
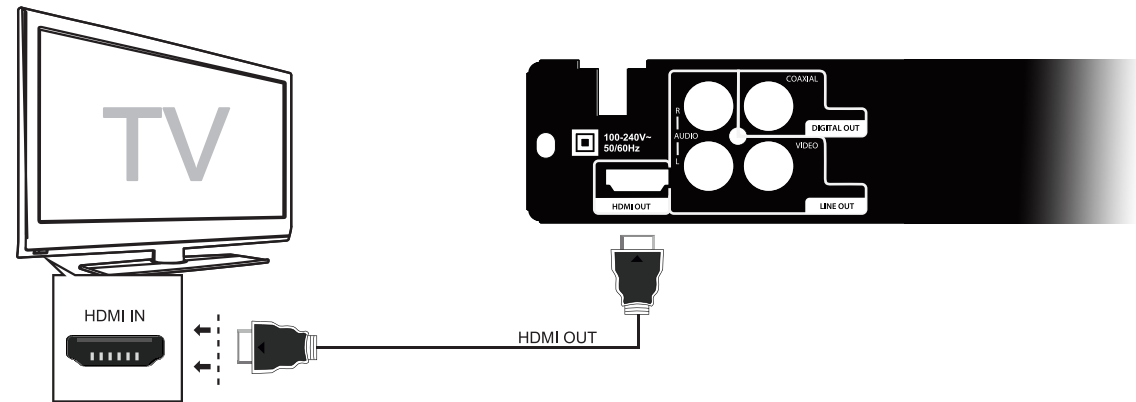


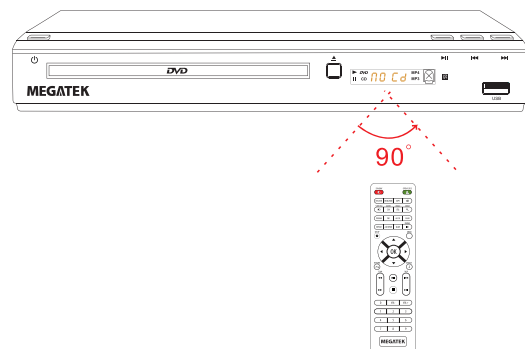
QUICK START GUIDE

1 Connecting to TV

The Best



2 Using the Remote Control

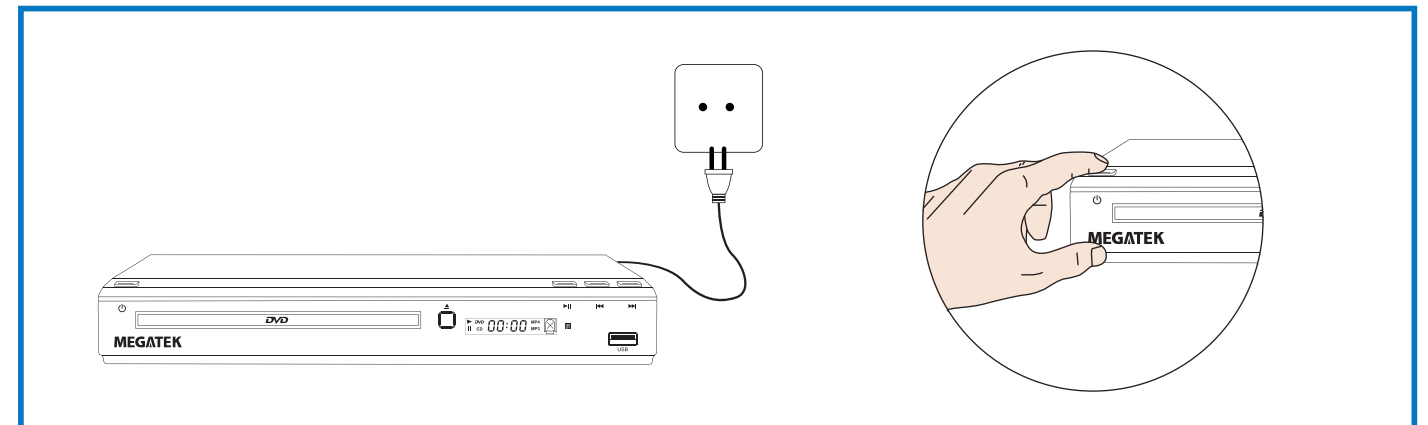


Insert the Remote Control Batteries

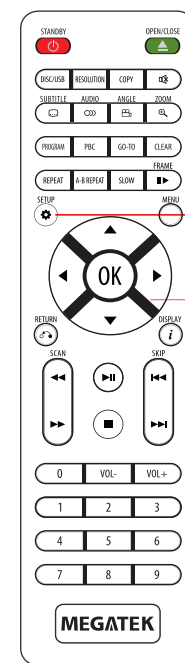
1. Remove the cover of battery compartment.
2. Install two AAA size batteries. Make sure to match the "+" and "-" ends of the batteries with the diagram inside the compartment.
3. Put the cover back in place, till you hear a "Click" sound.
4. When using the remote control, point it toward the main unit's remote control sensor, as shown.

3 Power on

1. Insert the plug into the socket correctly;
 2. Press the power button on the unit or remote control to turn on the unit.
- Note: Unplug this apparatus during lightning storms or when unused for long periods of time.

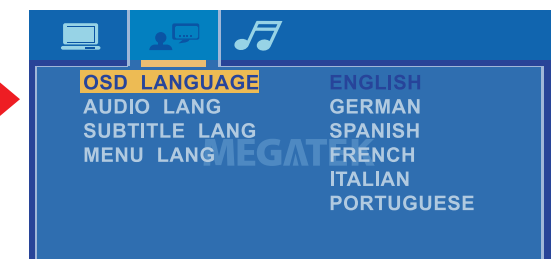
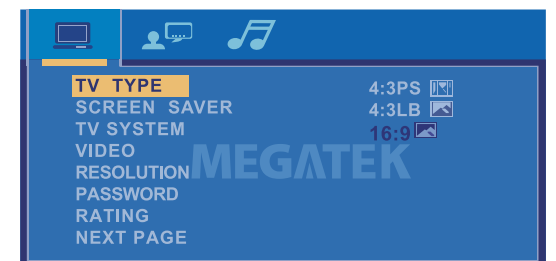


4 Selecting OSD Menu Language



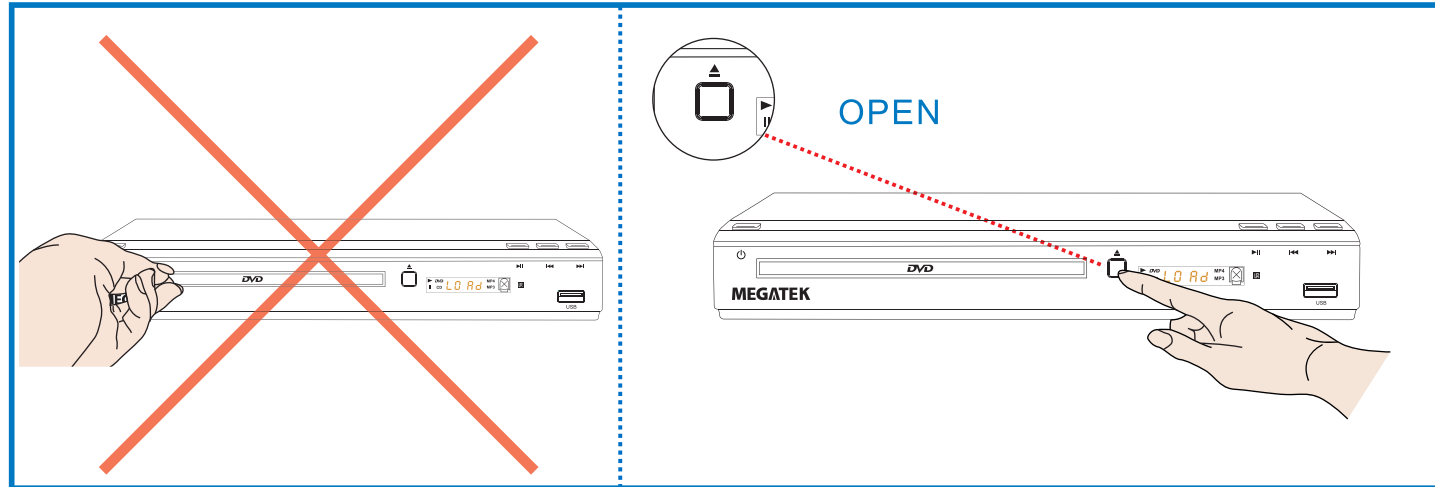
1

2



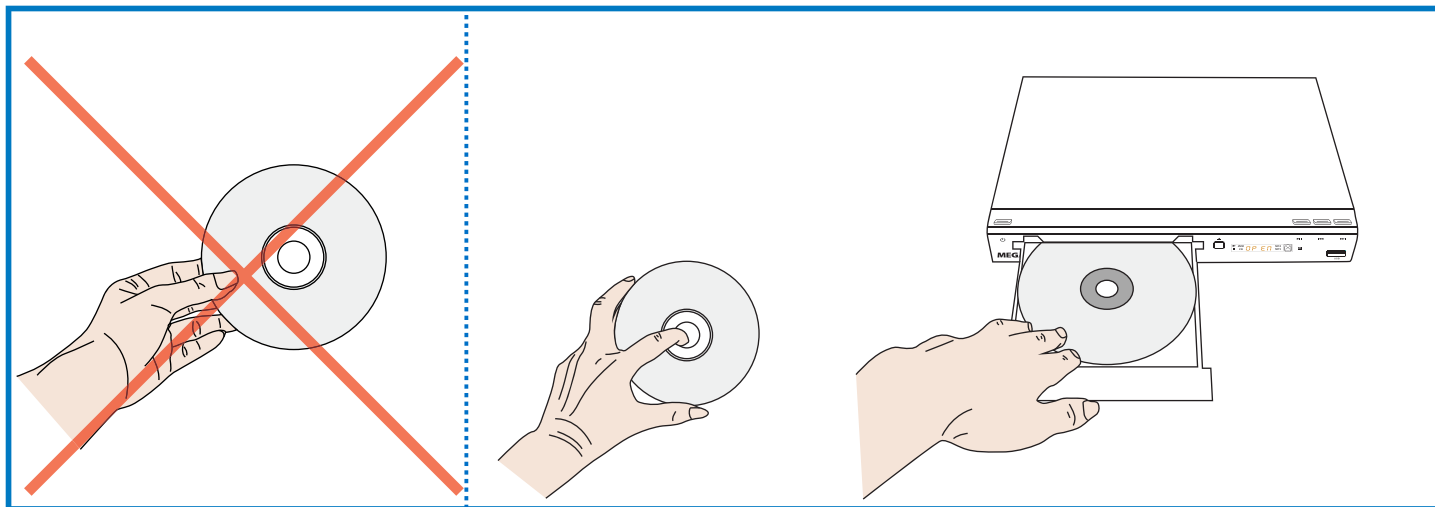
5 Playing a Disc

1. Opening the Disc Tray

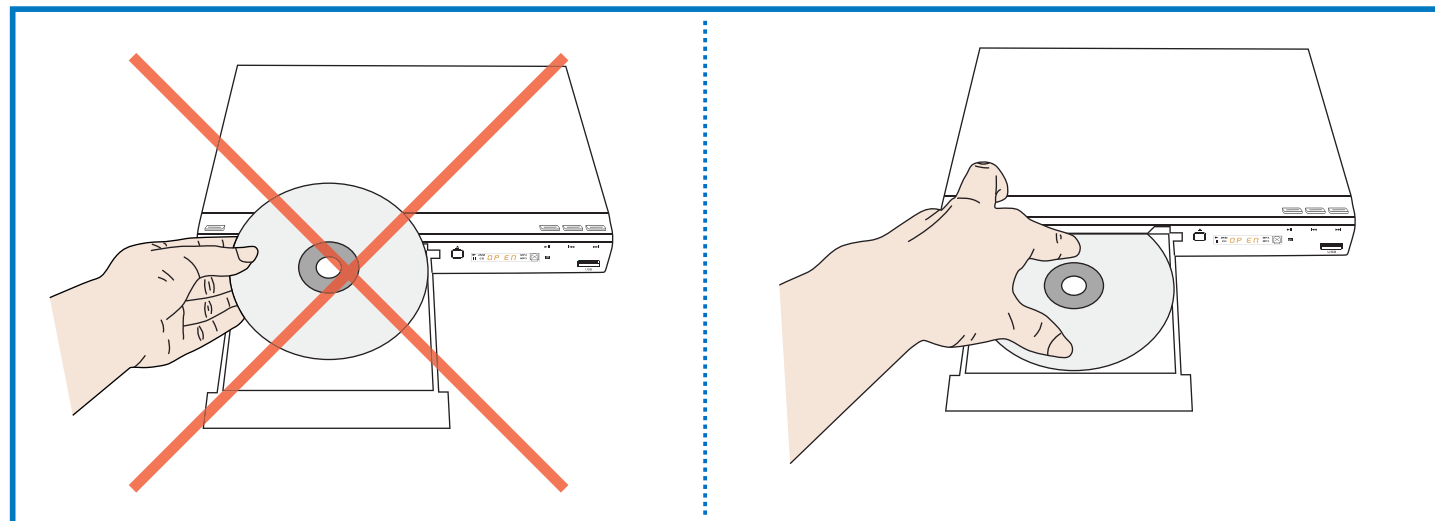


2. Placing a Disc

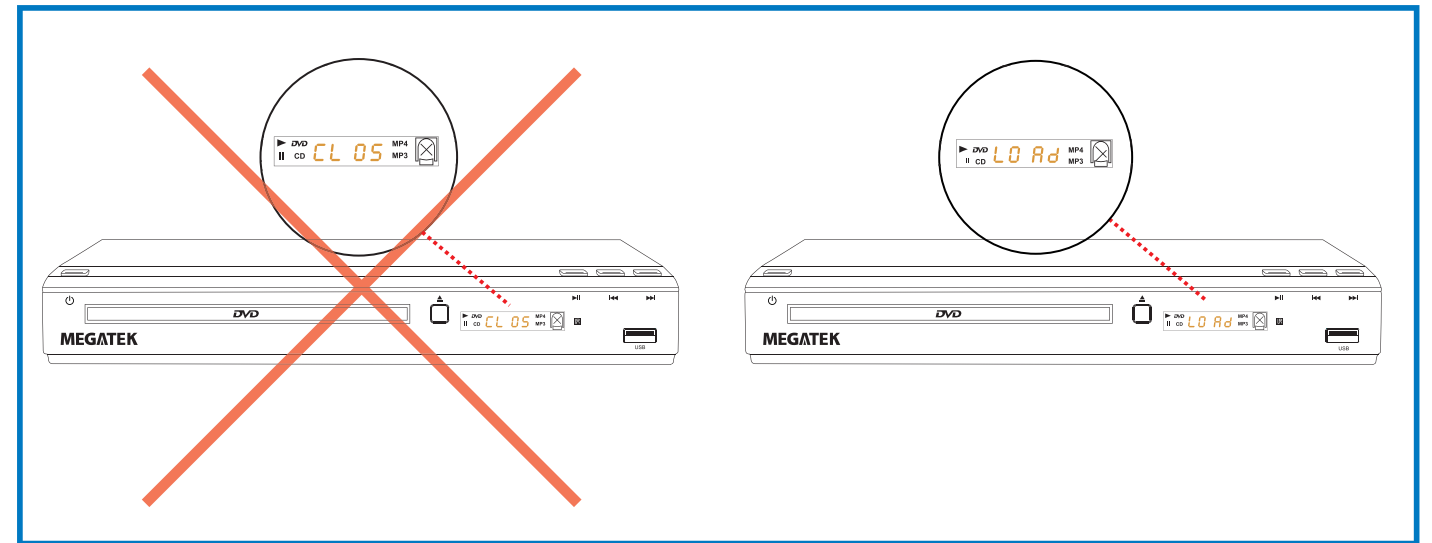
- 1) Hold the disc by the center hole and edges;
- 2) Place the disc in the compartment with the label-side facing up.



3. Removing the Disc

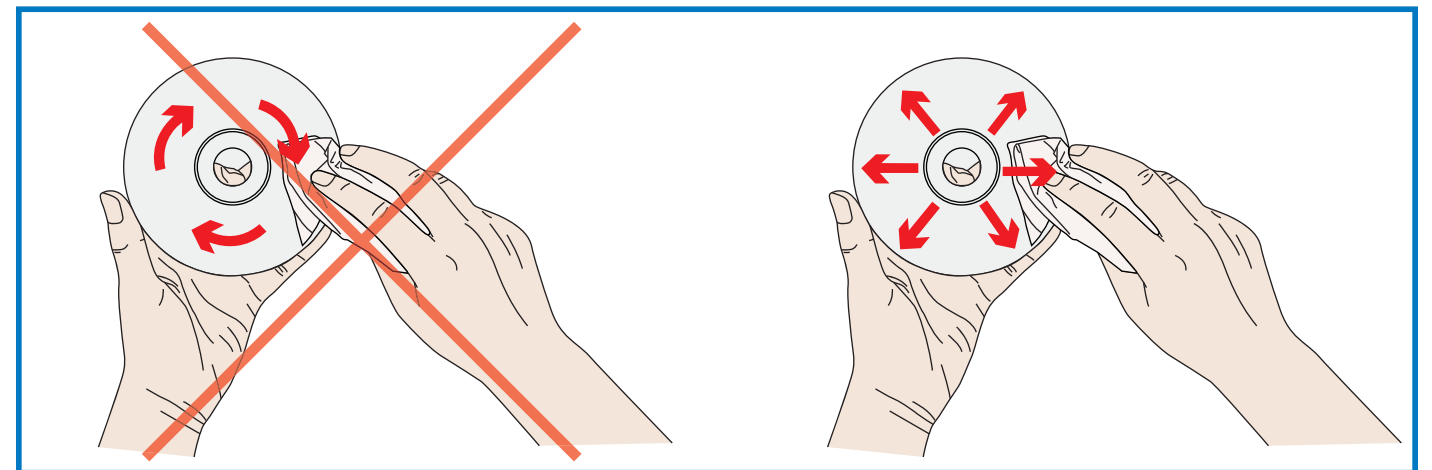


4. Playing the Disc



5. Cleaning the Disc

Clean the disc with a clean, soft, lint-free cloth, and wipe it outwards from the center.



6 Playing a USB Flash Drive

1. Press the USB button to change the input source to "USB".
2. Insert a USB flash drive in the USB port.
3. Use the direction button to select your desired content, and press ►|| to start playback.

