

# MEGATEK<sup>®</sup>

## Quick Start Guide

### Stereo Speakers T4

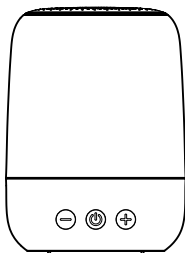
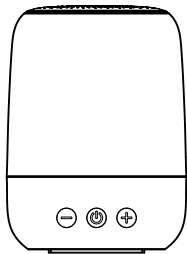
Before using your new product, please read these instructions to prevent any damage.



[www.megatekelec.com](http://www.megatekelec.com)

1

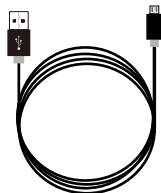
## Package Contents



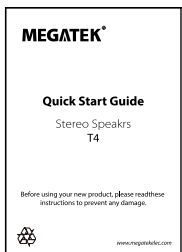
2 x Speakers



3.5mm Audio Cable



Micro-USB Charging  
Cable



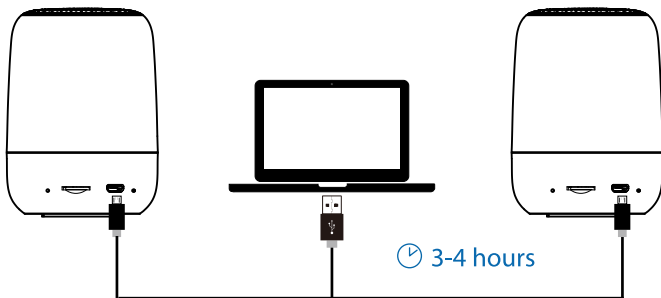
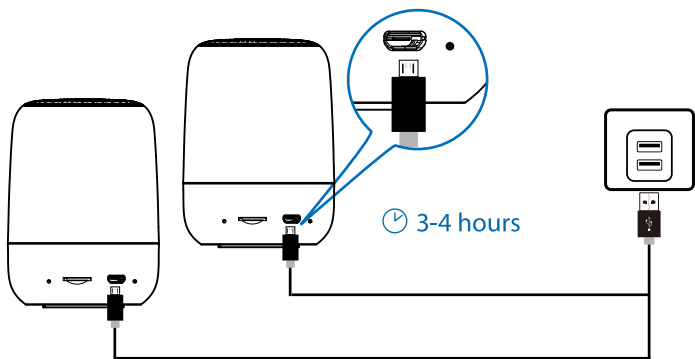
Quick Start Guide



User's Manual

2

## Charge your Megatek T4



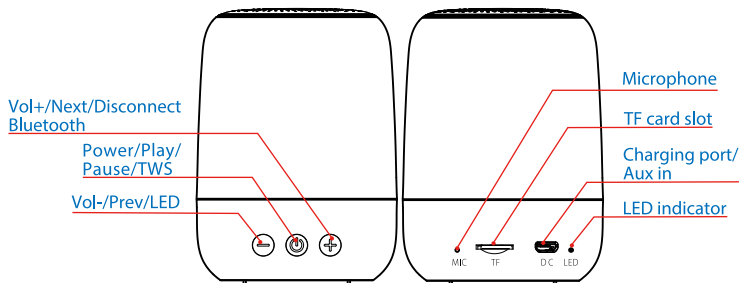
Use the included USB cable to charge your Megatek T4 and make sure they are fully charged before first use.

Disconnect your speakers from charger when fully charged. Do not charge your speakers for extended periods.

When not in use, store your speakers in a cool place.

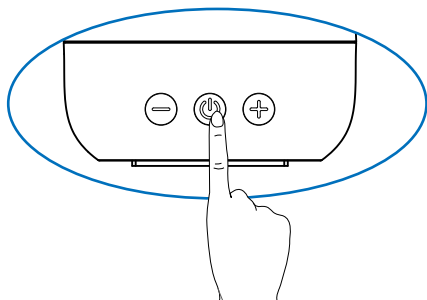
### 3

## Overview of the main unit



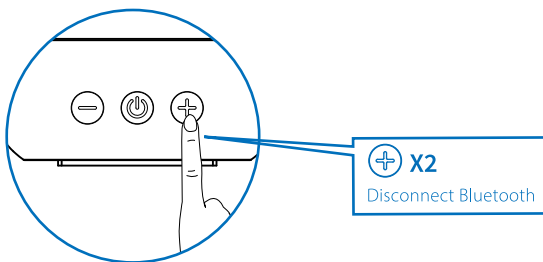
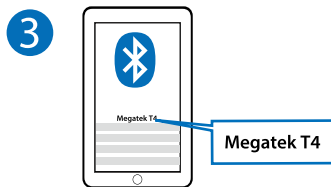
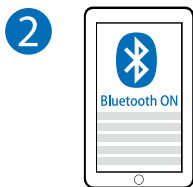
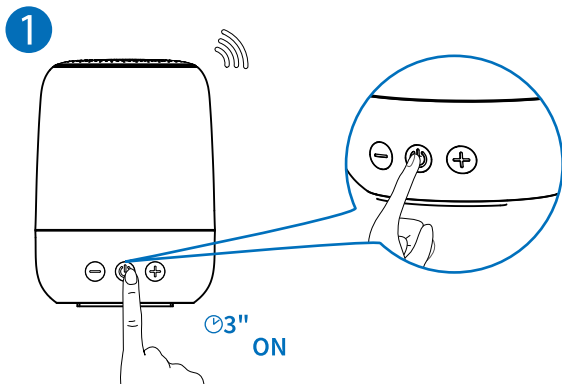
### 4

## Using Your Megatek T4



3" ON/OFF


## 5 Bluetooth

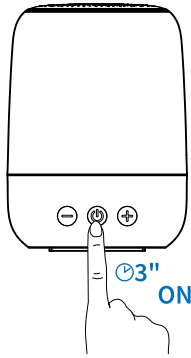
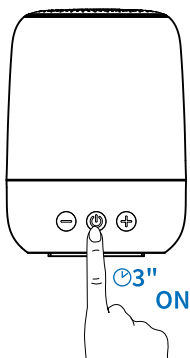


## 6

## True Wireless Stereo ((TWS))

1

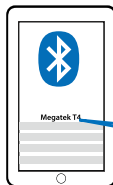
Press and hold the  button to turn on the two Megatek T4 respectively, and wait for the two Megatek T4 to automatically pair as one (TWS), a tone will sound when paired.



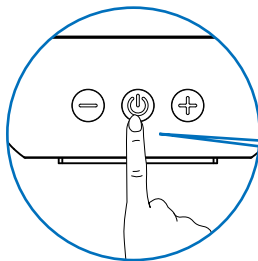
2



3



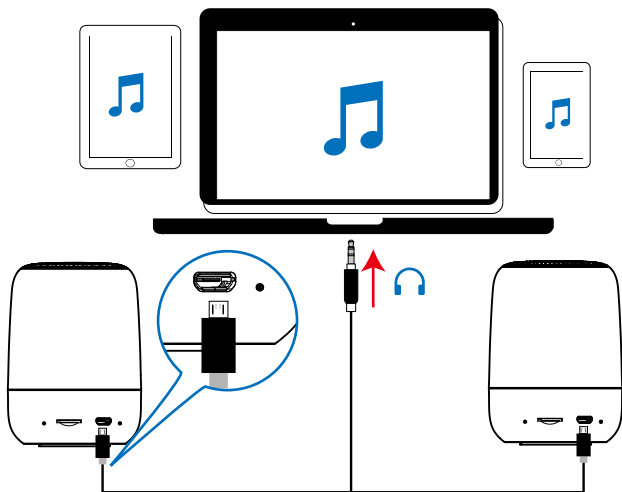
Megatek T4



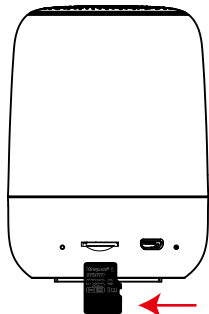
X2

Pair/Unpair TWS

## 7 Aux In



## 8 TF (Micro-SD) card



**Note:** TF (Micro-SD) cards can only be inserted in one direction. If the card does not easily slide and “clip” into place, remove, turn it around, and re-insert into the slot.

**TF (Micro-SD) card**

**Note:** TF card 8G/16G/32G supported.

Dear Customer:

If you are satisfied with our products and service, please rate us with 5 stars review and feedback! Your supports means a lot to us and will help us bring more good products in return to you.

**Always there to support you**

Get support at:  
[www.megatekelec.com](http://www.megatekelec.com)

Question?  
Contact Megatek:  
[service@megatekelec.com](mailto:service@megatekelec.com)